

Sterile Reprocessing and Supply Management

Consumables offering





Our Global Presence

The value we create

What we do

Getinge specialises in infrastructure and hospital workflows, we develop optimised room type and planning concepts and implement fully integrated solutions uniquely suited to our partners needs, helping to create the most efficient possible setup for each environment.

Sterile Reprocessing

With an extensive product offering Getinge is able to support the surgical workflow throughout the hospital. From operating tables and lights, digital integration in the OR through to a complete CSSD offering supported by innovative IT solutions, covering instrument traceability through to patient flow and OR Scheduling Getinge has the flexibility to assist with supporting all dynamic hospital environments.

The value we create

Getinge's product portfolio helps to contribute to fewer patients contracting serious infections in hospital – a major and costly problem the world over.

Our solutions are a component of achieving greater efficiency in the operating room, to help shorten waiting times for patients and improve hospital finances.

Our goal is that an additional operation should be able to be conducted per room per day at each hospital.

Becoming CO₂ neutral by 2025

Getinge endeavors to become a CO₂ neutral company by 2025. The target will be reached by a stepwise approach in several areas and supports the company's objective to contribute to an environmentally sustainable health care. In 2012 we started changing the products' environmental impact over the product life cycle through our EcoDesign principles. This covers all steps from the extraction of raw materials to production, distribution and use, all the way to recycling and disposal. Now we take this a step further, going all CO₂ neutral. Between 2010 and 2018 the direct and indirect emissions were reduced by 29% (ton CO₂/MSEK).

»It is our responsibility to do our utmost to provide our customers with safe and sustainable products.«

Mattias Perjos, President & CEO





**Complying to AS/NZS 4187:2014
Reprocessing of reusable medical
devices in health service organisations?**

Effective and safe reprocessing of reusable medical devices (RMDs) in health service organisations (HSOs) is a critical aspect in the prevention of health care associated infection.¹ The objective of AS/NZS 4187:2014 is to ensure that HSOs correctly clean, disinfect and sterilize RMDs prior to and between patient uses in order to produce RMDs that are able to be used safely without risk of transmission of infectious agents.¹

Sterile Reprocessing in accordance to local standards

What we do

Getinge specialises in infrastructure and hospital workflows, we develop optimised room type and planning concepts and implement fully integrated solutions suited to our partners needs. With an extensive product offering Getinge is able to support the surgical workflow throughout the hospital. From a complete CSSD offering supported by innovative IT solutions, covering instrument traceability through to patient flow and OR Scheduling, through to operating tables and lights, and digital integration in the OR.

Every day you reprocess a variety of instruments at different times, temperatures and conditions. The one thing you want is assurance that your goods have been

thoroughly cleaned and sterilized in accordance with your local standards and facility requirements.

Getinge partner with you to create a solution that supports your dynamic hospital environment, whilst aligning with the requirements of AS/NZS 4187:2014.

Barrier System

As a part of the best practice implemented by AS/NZS 4187:2014, Getinge's solutions are based on the barrier principle, ensuring clear separation of soiled, clean and sterile zones. The zones are separated by pass-through washer-disinfectors and sterilizers. Our team can help you to create an effective solution based upon the size and conditions of your facility.



"If it's not clean, it can't be sterile". Unclean items from the OR, wards, outpatient and other departments arrive at the soiled zone, otherwise known as the decontamination area. It is vital that instruments are decontaminated prior to sterilization.



The clean and disinfected goods enter the area for sorting, inspection and packing. They can be unloaded manually or by an automated system. Once sorted, inspected and packaged, the goods are ready for sterile reprocessing.



The sterile goods are stored on racks or in storage/distribution trolleys for further transport within the hospital. Getinge supplies various kinds of loading or distribution trolleys that you may need for easy transport.



Instrument Reprocessing: Soiled Zone

Getinge's products are based on the barrier principle, ensuring clear separation of soiled, clean and sterile zones. The zones are separated by pass-through washer-disinfectors and sterilizers. The following pages will describe the consumables we offer for each of the zones, starting with cleaning and disinfection consumables for the soiled zone.

Getinge also offer capital equipment for the soiled zone. For more information on capital equipment please see our CSSD Workflow Offering brochure ([click here](#)) or contact your local Getinge Sales Representative.

Unclean items from the operating theaters, wards, outpatient and other departments arrive at the reception area. After visual inspection, items are either put straight on racks and loaded into the pass-through washer-disinfectors or manually cleaned by soaking, spray-gun rinse and/or ultrasonic cleaning, and then put into the washer-disinfectors.

A traceability system must be implemented that documents the processes and cycle information of RMDs through the soiled zone.

Click or scan the QR code to watch a fly through of the Soiled Zone



Cleaning and Disinfection Consumables

Getinge offers a wide range of consumable products to help achieve validated results. From cleaning detergents to soil tests through to dosing solutions each help guide every step to clean and disinfect instruments.



Getinge Clean - Detergents

We offer a comprehensive range of instrument cleaning detergents and maintenance products to meet your department needs. The range includes formulations to handle the most challenging of instrument cleaning obstacles such as pre-treatment, complex minimal invasive instrumentation, prion (Creutzfeldt- Jakob disease) and biofilm.

Getinge Assured - Wash Monitors

Our wash monitoring indicators perform routine process performance tests in both ultrasonics and washer-disinfectors. They assess cleaning efficacy and help by providing an easy to read monitor at that point on all phases of the process. The same test is available in lumen monitors that can be used across both rigid and flexible holders.



Getinge Assured - Protein Tests

A quick and easy test use to detect residual protein on surfaces and surgical instruments. This test provides a semi-quantitative measure of surface cleanliness; the higher the level of contamination of protein (bioburden), the darker and faster the colour changes to blue. Accuracy of 1 µg in less than 10 seconds.



Getinge Assured - Test Soil

The Getinge Assured Test Soil has been carefully designed to simulate the soiling that occurs during theatre use. The bright red colour of the test soil allows easy identification of areas that have not been properly cleaned. The test soil is available in singular pots and boxes of 10.

Cleaning Management System

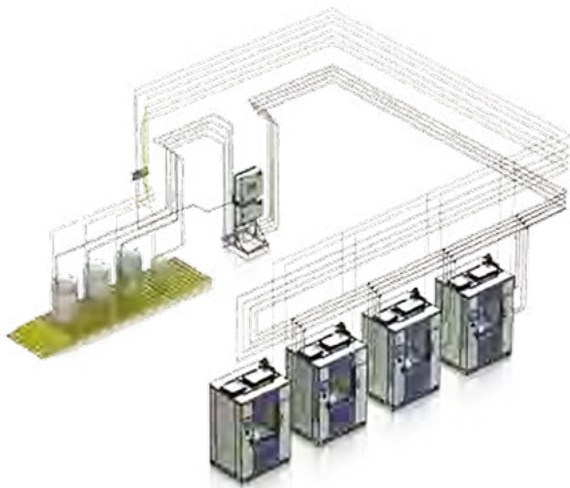
A better way to manage your detergents

Getinge CMS is a central dosing system that maintains the correct level of detergent for up to 15 washer-disinfectors, ultrasonic cleaners, or manual cleaning stations within the CSSD.

Designed to keep your department running seamlessly

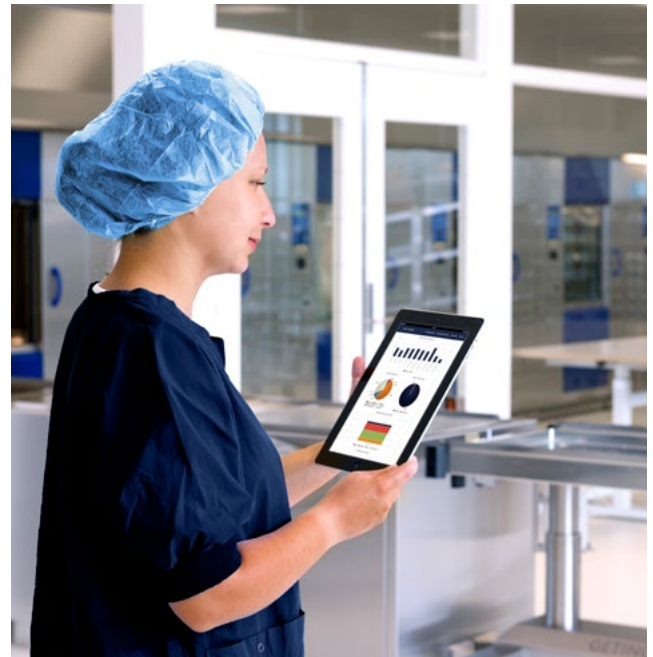
Getinge Clean Management System (CMS) keeps washer-disinfectors day tanks and other connected equipment topped up at optimal levels. The system consists of sealed day tanks which are used as a buffer between the detergent containers and the connected equipment. Each day tank is also equipped with three level sensors to maintain the right detergent level so your staff don't have to worry about having to check the detergent levels or tanks running dry.

The washer-disinfectors utilise their standard dosing system with suction wands, detergent pumps and flow meters. This simplifies implementation since the validation process in the washer-disinfector is not affected.



Remotely check your system parameters and detergent levels

Getinge Online (Included Free of Charge) can be used to remotely check system parameters. The software sends a notification via email and/or text (SMS) message to your mobile phone or PC to indicate the CMS has reached ordering level. It also provides a warning alarm before levels reach a critical point.



Getinge Online is the enabler of Getinge Services that helps to ensure the highest performance and availability of your Getinge equipment along with access to valuable information via your personal web portal.

Click or scan the QR code to get a visual tour of the Clean Management System





Sterilization Consumables

Getinge helps to enable a seamless workflow of instrument reprocessing. We can help you develop an efficient and cost effective workflow to streamline the process from the moment the instruments have been used, to the moment when they are processed and ready to be used again.



Sterilization Rolls & Pouches

Getinge Pack Sterilization Rolls and Pouches are intended for use with steam, ethylene oxide and formaldehyde sterilizers. They help to provide an effective solution against recontamination after sterilization. A wide range of standard sizes are available. They are CE marked and in compliance with international standards ISO 11607-1, ISO 11140-1 and EN 868-5.



Tyvek Rolls & Pouches

Getinge Pack Tyvek Sterilization Rolls and Pouches are intended for use with vaporised hydrogen peroxide (VHP and ozone sterilizers). They help to provide an effective solution against recontamination after sterilization. A wide range of standard sizes are available. They are CE marked and in compliance with international standards ISO 11607-1, ISO 11140-1 and EN 868-5.

2

Instrument Reprocessing: Clean Zone

On leaving the washer-disinfector, the clean (but not sterile) goods enter the area for sorting, inspection and packing and are then placed in pass-through sterilizers.

For these tasks, Getinge has a full range of practical and easy-to-use equipment that can be adapted to suit different requirements and capacities.

The following pages will describe the sterilization consumables we offer. To see Getinge's offering of capital equipment for the clean zone, please see our CSSD Workflow Offering brochure (click here).

Click or scan the QR code to watch a fly through of the Clean Zone



Bowie-Dick Tests

Getinge's innovative Bowie-Dick type tests have been developed and tested to conform to the requirements of EN ISO 11140-4. Our sensitive advanced ink technology provides greater accuracy and user information on process conditions compared to conventional test packs.



Chemical Indicators

Getinge Assured Emulating Indicators are the most advanced chemical indicators for monitoring the specific steam sterilization parameters of time, temperature and steam inside the pack.

When a pack is opened, OR staff can quickly verify that the conditions for sterilization were achieved in the location in the sterilizer where the pack was placed.

Sterilization Consumables

With tailor made solutions we can help you to develop an efficient and effective workflow to streamline the process of sterilization.



Process Challenge Devices

Helps to verify air removal, steam penetration, exposure levels and deep vacuum necessary for the sterilization of hollow lumen instruments. Batch Monitoring System annodised aluminium device is re-usable, the Helix Test is also available as a re-usable for 250 uses alternative. The test is available in 3.5, 4, 5.3 and 7 minutes.



Titems Instrument Holders

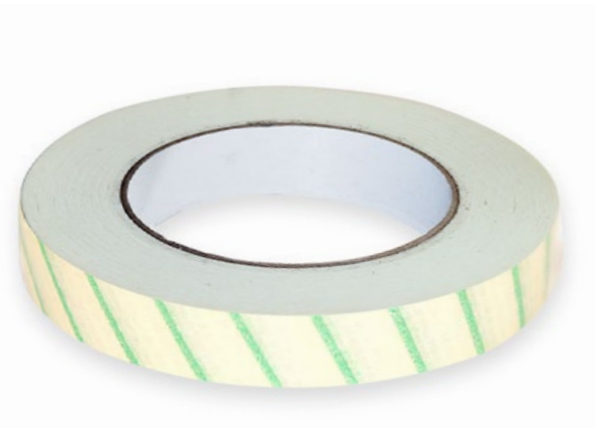
Helps to secure delicate surgical instruments and protect them from damage during steam sterilization. Designed to protect against punctures during storage after sterilization. Features clear viewing of the instrument tip for easy identification.



Biological Indicators and Incubators

Smart Read EZTest and EZTest are a range of self-contained biological indicator for monitoring steam, ethylene oxide or H₂O₂ sterilization.

Smart-Read EZTest allows a user to release sterile product with true biological confirmation. This system uses a biological indicator (BI) - with no added enzyme which is incubated, evaluated, and documented in one simple, automated operation.



Geringe Assured Tape

An exposure monitor that securely seals packs, and provides a visual assurance that the package has been exposed to the steam sterilization process.

Offers a high quality adhesive with lead free ink to help ensure there are no hazardous waste issues. Available for steam and ethylene oxide sterilization.

Endoscope Reprocessing Consumables

As endoscopes are used in an increasing number of procedures, endoscope reprocessing becomes an increasingly important part of any infection prevention plan. Geringe can help to develop optimised room type and planning concepts for your new seamless workflow with our pass through technology employing a barrier system that reduces cross-contamination.



Aperlan A, Aperlan B & DLC

We made it easy to use in everyday work, we have also simplified changing detergent and disinfectant bottles. Features an alkaline type detergent (DLC) with well-documented efficiency for protein and biofilm removal. The high-level disinfectant used is the peracetic acid-based (Aperlan A & B), where two agents are mixed inside of the machine.



Geringe Clean Manual Plus

The product is pH neutral, multi-enzymatic detergent specially formulated to rapidly digest protein, biofilms and other components of surgical soils. Geringe Clean Manual Plus is designed for manual and ultrasonic cleaning of both standard surgical instruments and endoscopes.

Our ED-FLOW uses Geringe DLC alkaline detergent that has proved to be an effective protein and biofilm remover³. A study evaluated the efficacy of the cleaning stage of a standard cycle in the ED-FLOW. The results showed DLC was able to reduce 97.7% of the biofilm initial protein in chamber 1 and 99.4% of the initial protein in chamber 2 (Richard, 2009). This results of the study were consistent with the cleaning efficacy requirements of ISO 15883-5F.

Importance of biofilm removal

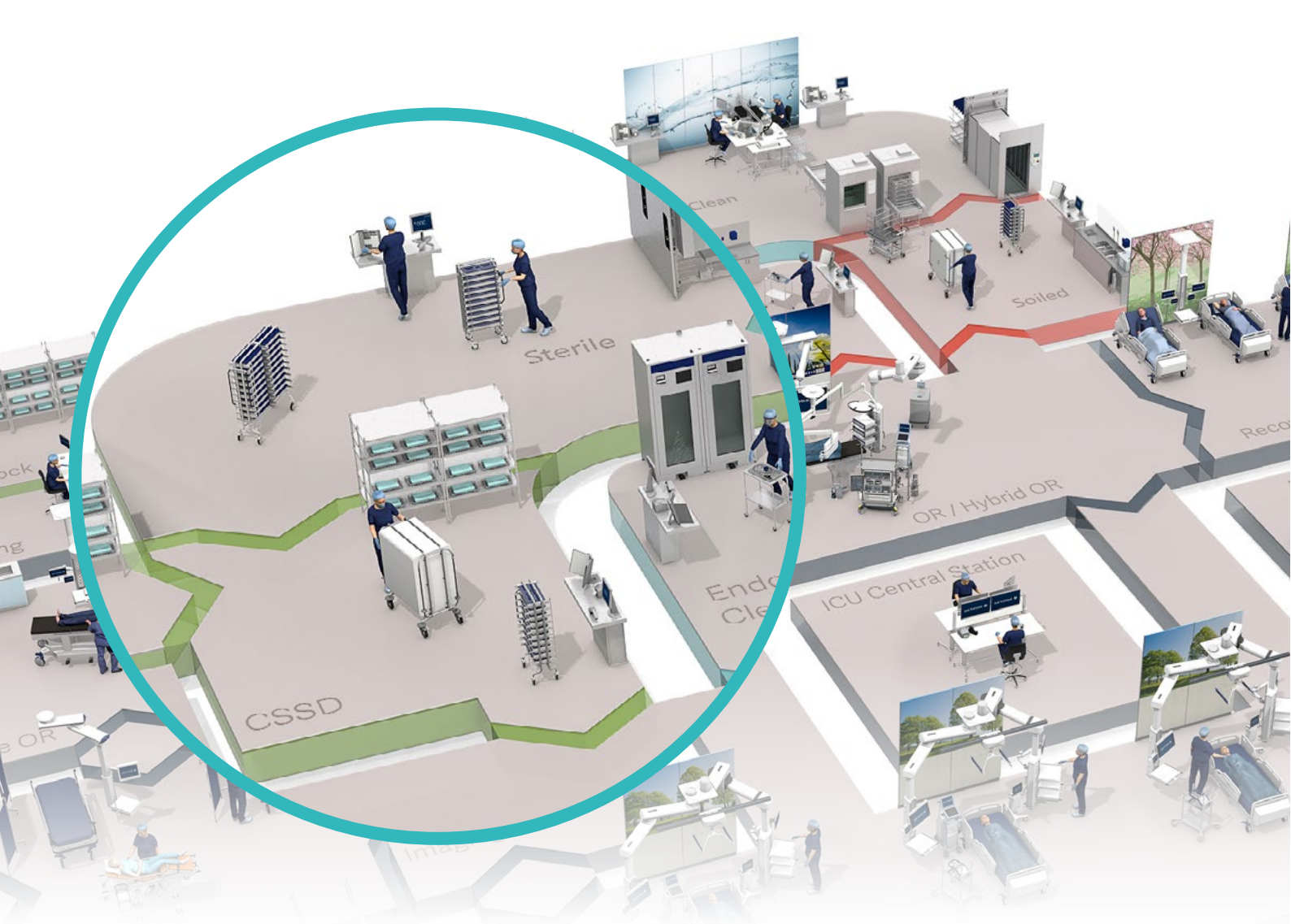
Biofilm is the growth of one or more types of microorganisms that can stick and grow on surfaces without proper cleaning. The biofilm cleaning efficacy pass criterion of ISO 15883-5F is removal of more than 90% of the original biofilm. A study showed using the same cleaning cycle performed with distilled water at 40°C, 1:100 diluted detergents showed Geringe Clean enzymatic detergents removed >90% (Pass) biofilm (Kirchmajer & Sava, 2013²).

Our Manual Plus chemistry has a lower dose rate and greater biofilm cleaning efficacy to other brands on the market.

Detergent	Standard Dose Rate	Heavily Soiled Dose Rate
Geringe Clean Manual Plus	2-10mL/Litre	20mL/Litre
Other brands on the market	10mL/Litre	50mL/Litre



Click and scan the QR code to get a closer look into your new Endoscopy Department



3

Instrument Reprocessing: Sterile Zone

On completion of the sterilization process, the sterilizers are unloaded with Getinge's ergonomic, user-friendly equipment. The goods are then further transported to sterile storage or directly to the point of use.

Whatever the type of goods carrier and transport, Getinge has the right equipment. All of these products can be viewed in our CSSD Workflow Offering brochure ([click here](#)).

The next chapter will outline Getinge's traceability systems available to document the process and cycle information of RMDs as they are reprocessed.

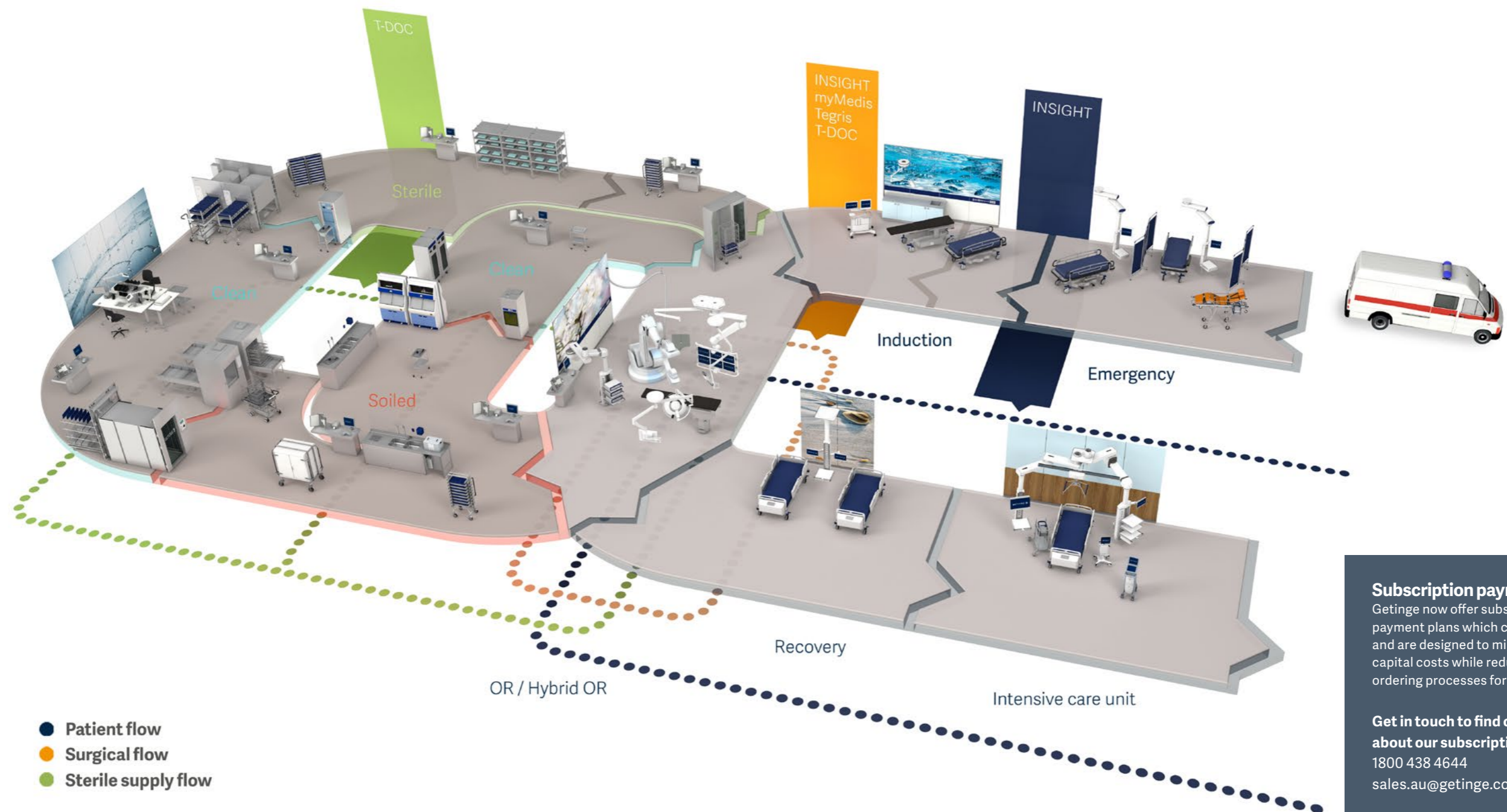
Click or scan the QR code to watch a fly through of the Sterile Zone



Getinge's Traceability Solutions

Leading the way in traceability, with 1,100 customers in Australia and New Zealand

Getinge is the leading provider of traceability solutions. In Australia and New Zealand we have over 1,100 customers, over 16 years extensive experience and a large dedicated local team making Getinge the largest provider of traceability solutions.



Subscription payment plan
 Getinge now offer subscription model payment plans which create flexibility and are designed to minimise upfront capital costs while reducing the manual ordering processes for your facility.

Get in touch to find out more about our subscription packages:
 1800 438 4644
sales.au@getinge.com

Sterile Supply Management

Your traceability partner

We provide the expertise to evaluate and offer the optimum solutions to meet our customer's needs, coach our customers step by step through the implementation process and provide continued after sales service and support.

When it comes to the sterile workflow, Getinge offers a complete range of traceability solutions to enhance the sterile workflow from our Meditrax range to T-DOC 2000 which offers robotics and automation functionalities. As your dedicated partner for traceability, we enable you to select the best solution for your facility.

The modular functionality of each solution gives you flexibility to develop and adapt your system over time. We have designed our solutions to allow your department a gradual and smooth transition throughout your traceability journey. Whether this be from manual

tracking to electronic tracking, or through to an advanced robotic solution.

- Getinge supports a seamless transition from manual to electronic tracking.
- Each of our tracking solutions assists with compliance to AS/NZS 4187 standards.
- Modular solutions can be easily upgraded and expanded.
- Subscription model payments create flexibility.

Your traceability partner in the sterile workflow



Your traceability partner in the sterile workflow

Would you like to know more?

Click or scan the QR code to learn more.

Modular solutions to meet your ever changing needs



MEDITRAX®

MEDITRAX is a comprehensive manual traceability solution that allows you to record each and every step in your sterile supply workflow.

The MEDITRAX® Total Traceability System (TTS) was designed to provide documentation with tight control, to dramatically lessen the potential of process errors and highlight any deficiencies.



T-DOC Select Starter

An entry level solution allowing for expansion towards a full electronic traceability solution. T-DOC Select Starter enables you to electronically manage your instrument and tray data in a central database including instrument and tray names, supplier information and tray content lists. Used in conjunction with the MEDITRAX® manual traceability solution, enabling you to implement a total traceability solution through the entire sterile workflow.



T-DOC Select

T-DOC empowers the CSSD with operational, statistical and production data that assists with compliance to AS/NZS 4187 standards. T-DOC supports an accurate and consistent workflow by providing staff with clear and image driven instructions in reprocessing, packing and distribution. Furthermore, T-DOC informs staff which instruments and trays to use first based on expiry date, which reduces time consuming and costly re-sterilization.



T-DOC 2000

T-DOC 2000 is our most comprehensive sterile supply management and traceability solution. Bringing complete overview and integration to the instrument supply chain. Plan and prioritise your production according to the surgery schedule for the highest functionality and utilisation, enabling an optimal workflow. T-DOC 2000 is a scalable solution tailored to your hospital's specific needs, while helping to reduce the risk of human error through greater process automation.

Go Live

Upon 'go live' of your new solution, you will benefit from dedicated training and support with the Getinge Academy of clinical trainers, who are experts in their relevant fields.

Our team will work with you to develop tailored education plans. Meetings with education and management teams will identify requirements and outcomes, allowing us to outline best strategy for education. Whether we are training a handful of staff or hundreds of staff, Getinge has the capability and local support structure to deliver the right training for you. Go live can be implemented with structured education, formal and informal across all shifts.

As your dedicated partner, we know that training is an ongoing priority, not just a one-off process. Getinge will prioritise ongoing meetings with key stakeholders to track and fine tune future training requirements.

Partnering with Getinge gives you access to the clinical/ device updates via formal and informal education strategies, phone, web and site visits.

Benefit from our local Experience Centre

Our local Experience Centre in Brisbane offers a Central Sterile Supply Department (CSSD), an Operating Room (OR), and training facility that can accommodate in person and virtual training.

At Getinge, we place a strong emphasis on training, offering our customers opportunity for continuous demonstrations and ongoing product based educational support.

Getinge training programs

Our training programs are designed to cover all needs. Both super-user and general training staff will be empowered and comfortable in using, troubleshooting and training on the equipment.

Global and local Getinge Experience Centres

Our Experience Centre is a great place to experience what Getinge is capable of and how we can be your best partner.



Click or scan the QR code for a 360 virtual tour of our global Experience Centre in Rastatt.



14
Local Getinge Academy Team members across Australia & New Zealand

Ongoing Support and Service

Getinge has a long and proud history of designing and developing medtech equipment. In line with our quality and operability of our equipment we also support our customers by providing support through our service department.

Our trained Field Service Engineers are available to ensure your equipment is maintained to maximum availability and longevity from your investment.

We believe in the philosophy of partnering with our customers to understand your operating needs and requirements. This allows us to support you doing important things like caring for your patients.

With our Getinge Care service we are able to tailor service support to meet your environment and operating constraints. Our Field Service Engineers have extensive experience in the medical field and are able to work in with your caseloads, facility standard operating procedures and environmental constraints.

To ensure you are able to meet the needs of your patients we are also able to provide biomedical training to your internal biomedical engineers to have the ability to maintain your equipment independently and escalate when further support is needed.



Preventative

Partner Preventative Maintenance labour from a product specific service schedule: the intention of Preventative Maintenance is to help avoid unexpected expenses by identifying problems before they become actual or critical.



Plus

Get more with our Plus package. On top of our Preventative package, with Plus, Getinge will also provide preventative maintenance kits to assist in identifying and troubleshooting issues, enabling greater equipment up-time.



Premium

The Premium package gives you financial control over your investment. This package includes all Preventative Maintenance parts and labour as well as all Corrective Maintenance parts and labour. Our premium package helps to reduce your administrative costs by removing the need for incremental purchase orders.



Partner

Getinge will train your in-house engineering team on how to conduct the manufacturer's recommended diagnostics test. This allows the flexibility to reduce cost and minimise downtime with your own on-site team. Our Partner package includes nominated Preventative Maintenance and Corrective parts.

References

- 1 AS/NZS 4187:2014 Reprocessing of reusable medical devices in health service organizations
- 2 Kirchmajer, D. & Sava, A., 2013. 'Comparison of biofilm removal efficacy of medical instrument detergents' Novapharm Research Australia Pty Ltd
- 3 Richard, M. 2009. 'Evaluation of the efficacy of the cleaning stage of the standard cycle of an endoscope washer-disinfector according to ISO 15883-4:2008 Clauses 4.3.5 and 6.11.3 - Getinge ED Flow AER' Biotech-Germande



With a firm belief that every person and community should have access to the best possible care, Getinge provides hospitals and life science institutions with products and solutions aiming to improve clinical results and optimise workflows. The offering includes products and solutions for intensive care, cardiovascular procedures, operating rooms, sterile reprocessing and life science. Getinge employs over 10,000 people worldwide and the products are sold in more than 135 countries.

© 2022 Getinge Australia Pty Ltd ABN 67 009 673 518
Australian Phone: 1800 438 464 Email: sales.au@getinge.com
New Zealand Phone: 0800 1 438 4643 Email: sales.nz@getinge.com

www.getinge.com/anz

ANZ_SW_V1_002_0122
EXP 01/24